

NEW WORTLEY

community centre



New Wortley Community Association

ANNUAL REPORT

April 2016 - March 2017

COMMUNITY EVENTS • VOLUNTEERING
COMMUNITY BUSINESS • BETTER HEALTH
FEEL SAFER • GET INVOLVED



LOTTERY FUNDED



THE CHARITY'S MISSION STATEMENT

New Wortley Community Association exists to promote the well being of the inhabitants of New Wortley and the neighbourhood, in a common effort to improve their health, educational, social and recreational opportunities. The board's main object is to establish, manage and maintain the facilities at New Wortley Community Centre for this purpose.

“The most important activity New Wortley is unfunded and unmeasured. It's called human conversation.



COMMUNITY LED AND PROUD!

This has been a year of growth, change and opportunities for New Wortley Community Association. We have continued to attract investment to New Wortley and diversified our income streams, with some of our work being commissioned for the first time – thank you to Leeds City Council Adult Social Care, The CRC- probation services, and to Thornton Medical Practise. We still attract grant income to our area and as a high priority neighbourhood in the top 1% of deprived areas in the UK it is vital that we continue to press the case for investment in our area. Our Trading

income has improved significantly and we have been able to employ a large number of local residents as well as expand our volunteer base.

We have managed a £700K capital build project, delivering a brand new community centre on time and on budget in partnership with our great project team and the Big Lottery- our principal funder.

We focus on improving the quality of life for residents of New Wortley and this involves bringing opportunity and community led initiatives to the area.

“Our favourite “experts” are the ones who've properly earned the status by doing real stuff day after day, year after year. Not by theorising.

Welcome to this year's Annual Report

Last year I talked about the imminent hand over of the new building and our hopes for its future use.

Whatever our projected possibilities were they have been far exceeded.

Both of the buildings are being used by an increasing number of organisations bringing more people into contact with the Centre

Further we have made great progress in building relationships with like minded organisations locally and nationally.

Fund raising is always a concern and the year in question was very successful in this regard.

We have added to our management team and direct employees.

As always none of these activities would occur without the help and guidance of the board, I thank them for their support.

Our management, staff and volunteers are a fantastic team and are growing in confidence and abilities.

We are always mindful of our primary goal to benefit the local community and deliver value for money-so we thank our funders for their continued support



Bryan Bloom
Chair

Our Vision – Communities in Control

We are a Community Anchor organisation, where people can come in and access a range of help activities and services, a place where we can support local people and their ideas to improve the area and their lives.

We want to make the New Wortley a place where people can be proud of and take pride in, where people can improve the quality of their lives.

The association is led by and influenced by the local community. Our Trustees are all local residents or have a close association to New Wortley. We believe in co-production to ensure we respond to local need and issues. We are an example of a community led organisation, where power resides with

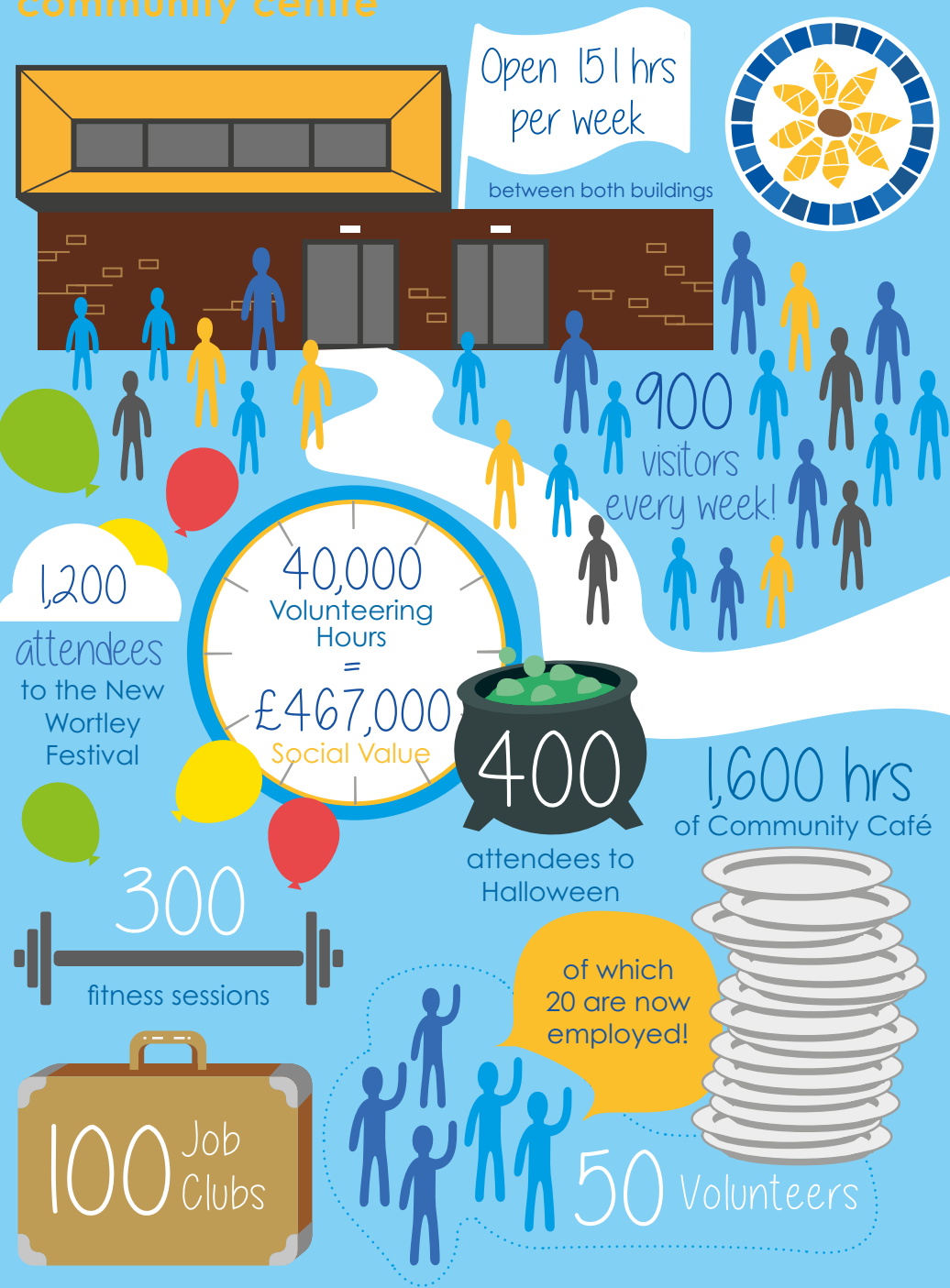
local residents.

We are tackling the long-standing issues in the area in a positive way, an inclusive way that understands that the solutions lie in the local people themselves. We are a hub for employment, training and opportunity, a hub for young people and a place where health and wellbeing are promoted. We are an inclusive organisation our users are aged from 0-100! We believe in activity and the positive effect that can have on people's lives and we want to encourage local people to get more active in whatever way they want.



NEW WORTLEY community centre

APRIL 2016 – MARCH 2017 5



What we do

New Wortley Community Centre offer people the opportunity to get their lives back on track, offering a range of activities, courses and social interactions that improve individual wellbeing.

In the year to March 2017 the community centre buildings were open on average 151 hours per week between both buildings.

In that time we delivered over 50 Lunch Clubs, over 300 fitness sessions, over 100 Job club sessions and supported in excess of 50 local volunteers, 20 of whom went into employment (January 2016 – December 2017) In addition over 2000 hours of activities combating loneliness and mental health issues, over 1600 hours of Community café and in excess of 40,000 hours of volunteering time for local community members and volunteers this equals £467,000 of social value.

40,000 hours
of volunteering time equals
£467,000
of social value

On an average week over 900 individual people use the community centre, access activities or use its facilities. (figures from our census Feb 2017)

People who access our activities report that their confidence has improved and the way they view their future as more positive. Our groups promote social support and interaction, and individuals who previously were socially isolated now have their own self support network.

NEW WORTLEY 2017 FESTIVAL

New Wortley Festival

In June 2016 we held a successful event - New Wortley Festival with over 1200 attendees involving Castleton primary school, Bethel Church and the local care homes. We worked with a wide range of partners to deliver this great community event including South Asian Arts, Angel of Youth, Leeds Carnival, Musicians, bands, performers and more.



Halloween at New Wortley

In October 2016 we had another successful Halloween event run with partners including Castleton Primary School, Groundworks, BARCA and Leeds Housing with approx. 400 local children and family members

Christmas Lunch Club

Christmas Lunch Club is always a huge success with the raffle drawn by Cllr James McKenna and songs from the children of Castleton Primary School

We opened on Christmas Day to provide a FREE Christmas lunch to adults who live locally but had nowhere or no means to celebrate Christmas. Thanks to Community Angels and Marvina Newton who supported our volunteers!

NEW WORTLEY



OFFENDER SUPPORT TEAM

Our Ex Offender Project

We have launched an award winning service that helps resettle people when they leave prison. This work has already been recognized in Leeds and nationally as a successful peer to peer led service that has a positive impact on individuals and reduces re offending – which costs the country anywhere between £9-£13Billion per year. We aim to develop more partnership work and focus on the quality of outcomes for people coming through the service. Thanks to our staff, volunteers, funders, partners and stakeholders in the remarkable success of a project that only started in 2016.



new wortley
COMMUNITY ARTS
PROJECT

Our Arts Projects

In January 2016 we started partnership work with the Peoples Health Trust to continue our work developing creative arts programs for local residents.

Our groups include:

- Community Choir
- Drama Group
- Poetry Group
- Nu Wortley All Stars – Band and music project
- Guitar and music lessons

We have had groups of New Wortley residents perform at Unity Day, New Wortley Festival, Armley Christmas Lights Switch on and more...

See a picture of our performance group attending the Hyde Park Unity Day 2017 on p3



For more info, contact Tim Dawtry:

✉ tim.dawtry@newwortleycc.org



Our Youth Project performs in the centre!

Our Projects

Youth Project

Partnership with Catch and Housing in September 2015 we started training local volunteers in youth work and we launched our own volunteer run Youth Project in March 2016. Addressing a need in the local area for a safe positive space for young people.

Youth Activities – Summer Activity Camp

In Summer 2015 we held an activity camp for young people in the area in partnership with WASP, Castleton Primary School and some support from healthy living network at BARCA. Over 60 children attended the provision and some of the comments were very inspiring.

Nu Wortley All Stars

A music group made up of local residents – they have played around the local area including the Armley Christmas lights switch on.

Walking Group

In 2014 we pioneered local walking groups and have continued to support this initiative. A great way to engage 'hard to reach' individuals.

Lunch Clubs

We continue to run a great local lunch club providing good quality food and company every Thursday at the centre.

Community Café

Our community café offers a great environment for local people to meet and have a chat over a drink or a snack. It provides great training and volunteering opportunities and many volunteers at our café have gone on to further work, employment or training

Links to school and health services

We have continued to develop strong links and partnerships to promote New Wortley and encourage new more effective ways of working in the local area.



Bill Graham (far left) at the Locality 16 event

Power to Change Funding

In September 2015 we were awarded £210,000 from The Power to Change. £60,000 of this money is to pay for capital improvements to the existing building and some feasibility work around potential projects. £150,000 enabled us to set up Team New

**20 volunteers
employed
equals
£228,800
of social value**

Wortley, a health focused team of predominately local people working to assist local community members in a number of ways. The aim is to prove the effectiveness of community focused health work in terms of addressing social isolation, low confidence & mental health issues. By encouraging people to engage and take part in activity we

see remarkable changes in their outlook, mood and attitude. Social connections grow, activities give them a purpose, and they can have the confidence to start to address the barriers that can be holding them back.

We are confident this work will be commissioned in 2017 as our outcomes are very positive and strong.

The Social impact of getting 20 volunteers into employment equates to £288,800 of social value!



LOTTERY FUNDED



Partnerships and Funding

In 2016 - 2017 we built really solid partnerships with a number of groups and agencies including Castleton Primary School, Thornton Medical Practice, Public Health, Leeds West CCG, Groundworks, The Conservation Volunteers, Local Police Team.

The Our Place partnership was a notable success, as we led on the development of Community Led plans for New Wortley.

For every £1
of revenue funding,
we produce £10
of social value

We had funding from Our Place, Henry Smith Charity, Big Lottery Safer Communities, Community First, Well Being fund, LCC MICE money, LCC Small Grant Money.

In the financial year we have increased turnover by almost 200% (approx. £220,000) and will report a surplus in excess

of £15,000, thanks mainly to our social enterprise activities. These remarkable figures are a reflection of building a strong base since 2010 and the association now being willing to develop its capacity and starting to deliver services and activities in the local area.

For every £1 of revenue funding we receive either as grant or commissioned service we are producing in excess of £10 of social value!

Our Place partnership

New Wortley Community Association is at the heart of this effective partnership delivering across a range of measures for the local area and residents. The New Wortley Our Place partnership continues to offer community led solutions to problems and issues. The Our place work has led to over £7m of investment in NWCA of the sum £2.5m, the securing of over £3.5m for an extension to the local primary school, and NWCA has raised over £1m invested in projects for the local area (including the new community centre).



News

We had a successful bid to Big Lottery to start building the New Community Centre in 2015 - £686,000

We have had over 50 Volunteers at the centre of whom 20 have gone into employment and 12 have undergone further training on enrolled in adult education classes.

In the forthcoming year we are creating a new community led 5 year plan for New Wortley – so will be asking for local residents vision of how New Wortley can look and feel in 5 years time – watch out for details.

The Community Association has started working on a local housing initiative to build affordable homes on the Clydes/ Holdforths estate in partnership with local residents. We aim to create a local Housing Association and hope to start building homes in 2019.

Our Health project and ideas won a nationwide 'dragons den' style pitch at Locality conference 2017 and we hope to promote our version of a community health service over the next 12 months.

“
Volunteering here
has improved my
confidence and
made me feel
more secure about
the future.”



“ Key driver of better health is feeling part of a community. So connecting people and creating community is our core health task.

New Wortley Community Association **ANNUAL REPORT**

April 2016 – March 2017

“ Volunteering at New Wortley gave me the confidence to apply for a job, and now I am a senior support worker helping other people in the area.

 @NewWortleyCC

 /NewWortleyCC

newwortleycc.org